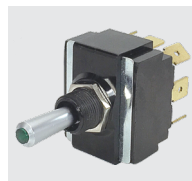


LT-Series

TOGGLE SWITCHES

The LT-Series illuminated toggle switches feature up to a three-color lighting sequence from a single lamp. These lighted toggles contain neoprene bushing seals for dust and moisture protection. A variety of circuits and terminations are available.



Product Highlights:

- 1 or 2 Pole
- Independent or Dependent Illumination
- Choice of 5 Actuator Styles
- Up to 3 different colors under a single lens

Typical Applications:

- Marine
- Transportation



Dielectric Strength

1000V - live to dead metal parts

Electrical Life

50,000 cycles - maintained
25,000 cycles - momentary

Operating Temperature

32°F to 185°F (0°C to 85°C)

LT-1561 - 1 30 - 012

¹
Base Part Number

²
Actuator
Style

³
Lighting
Sequence

⁴
Lamp Voltage

1 BASE PART NUMBER: SERIES / POLES / ILLUMINATION / CIRCUITRY / RATING / TERMINATION ⁵

10A 250VAC, 15A 125VAC, 3/4 HP 125-250VAC, 15A 12-28VDC

| Single Pole | Solder Lug | .250 Tab QC | Screw Terms | Wire Leads |
|---------------|------------|-------------|-------------|------------|
| On-None-Off | LT-1510 | LT-1511 | LT-1514 | LT-1515 |
| On-None-(Off) | LT-1520 | LT-1521 | LT-1524 | LT-1525 |
| (On)-None-Off | LT-1530 | LT-1531 | LT-1534 | LT-1535 |
| On-None-On | LT-1540 | LT-1541 | LT-1544 | LT-1545 |
| On-None-(On) | LT-1550 | LT-1551 | LT-1554 | LT-1555 |
| On-Off-On | LT-1560 | LT-1561 | LT-1564 | LT-1565 |
| On-Off-(On) | LT-1570 | LT-1571 | LT-1574 | LT-1575 |
| (On)-Off-(On) | LT-1580 | LT-1581 | LT-1584 | LT-1585 |
| Double Pole | Solder Lug | .250 Tab QC | Screw Terms | Wire Leads |
| On-None-Off | LT-2510 | LT-2511 | LT-2514 | LT-2515 |
| On-None-(Off) | LT-2520 | LT-2521 | LT-2524 | LT-2525 |
| (On)-None-Off | LT-2530 | LT-2531 | LT-2534 | LT-2535 |
| On-None-On | LT-2540 | LT-2541 | LT-2544 | LT-2545 |
| On-None-(On) | LT-2550 | LT-2551 | LT-2554 | LT-2555 |
| On-Off-On | LT-2560 | LT-2561 | LT-2564 | LT-2565 |
| On-Off-(On) | LT-2570 | LT-2571 | LT-2574 | LT-2575 |
| (On)-Off-(On) | LT-2580 | LT-2581 | LT-2584 | LT-2585 |

2 ACTUATOR STYLE

Paddle ¹

- 1 Clear Paddle
- 4 Solid Color Paddle

Snapkap Style ²

- 5 Bright Chrome
- 6 Satin Chrome
- 7 Black Molded

Notes:

- 1 Solid color paddle available with lighting sequence 01, 02, 10 or 20.
- 2 SnapKap Toggle Lenses are available separately. Consult factory.
- 3 Independent lamp is standard. Dependent lamp with ON-OFF function (including momentary) is available with Lighting Sequences 10, 20, 30, 40 and 50. (No light in OFF position.)
- 4 Green and blue not recommended with 125 volt or 250 volt neon lamps.
- 5 Additional terminations available. Consult factory for details.
- 6 Ignition protected (UL 1500) construction is available, consult factory for details.
- () Indicates momentary function.

3 LIGHTING SEQUENCE ^{3,4}

| | position 1 | position 2 | position 3 |
|----|------------|------------|------------|
| 01 | red | red | red |
| 02 | amber | amber | amber |
| 03 | green | green | green |
| 10 | red | --- | none |
| 11 | red | clear | red |
| 12 | red | clear | red amber |
| 13 | red | clear | green |
| 14 | red | clear | blue |
| 15 | red | clear | clear |
| 20 | amber | --- | none |
| 21 | amber | clear | red |
| 22 | amber | clear | red amber |
| 23 | amber | clear | green |
| 24 | amber | clear | blue |
| 25 | amber | clear | clear |
| 30 | green | --- | none |
| 31 | green | clear | red |
| 32 | green | clear | red amber |
| 33 | green | clear | green |
| 34 | green | clear | blue |
| 35 | green | clear | clear |
| 40 | blue | --- | none |
| 41 | blue | clear | red |
| 42 | blue | clear | red amber |
| 43 | blue | clear | green |
| 44 | blue | clear | blue |
| 45 | blue | clear | clear |
| 50 | clear | --- | none |
| 51 | clear | clear | red |
| 52 | clear | clear | red amber |
| 53 | clear | clear | green |
| 54 | clear | clear | blue |
| 55 | clear | clear | clear |

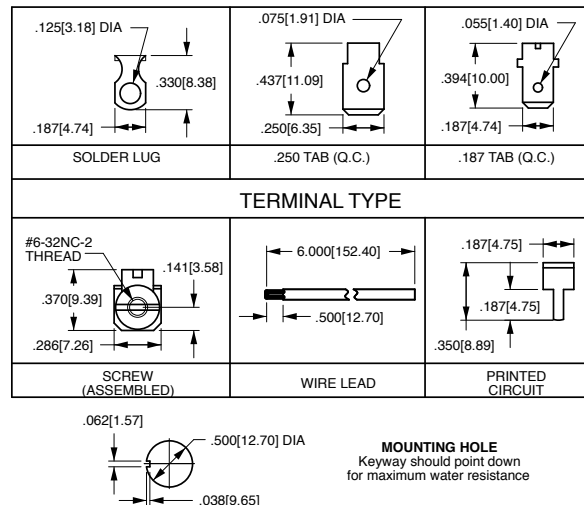
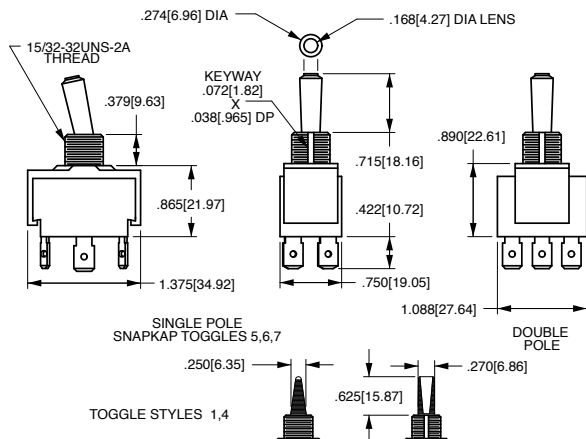
4 LAMP VOLTAGE ⁴

incandescent

006 6 volt 012 12 volt 018 18 volt 024 24 volt

neon

125N 125 volt neon 250N 250 volt neon



*Manufacturer reserves the right to change product specification without prior notice.