

170/172-Series

PUSHBUTTON SWITCHES

The 170/172-Series pushbutton switches are single pole, high amperage switches suitable for shallow back panel applications. These switches are momentary action and require an actuation force of 2.5 lbs. The 170/172-Series switches are equipped with a slow-make, slow-break contact mechanism and are rated at 15 amps at 125VAC.



Product Highlights:

- Rated to 15A 125VAC
- Sturdy metal clad construction
- Metal plunger available with optional colored plastic cap
- Momentary On or Momentary Off circuitry

Typical Applications:

- Test & Measurement
- Meters
- Horns



Dielectric Strength

UL/CSA: 1000V - live to dead metal parts

Electrical Life

25,000 cycles - Momentary

Operating Temperature

32°F to 185°F (0°C to 85°C)

172 - **CBL**

¹
Base Part Number

²
Cap Style/Color

1 BASE PART NUMBER: SERIES / POLES / CIRCUITRY / RATING / TERMINATION

10A 250VAC; 15A 125VAC

Single Pole

On-(Off)

Off-(On)

Solder Lug

170-B

172-B

Wire Leads

170-A

172-A

Screw Terms.

170

172

2 CAP STYLE / COLOR ¹

CBL

Black Plastic

CGN

Green Plastic

CRD

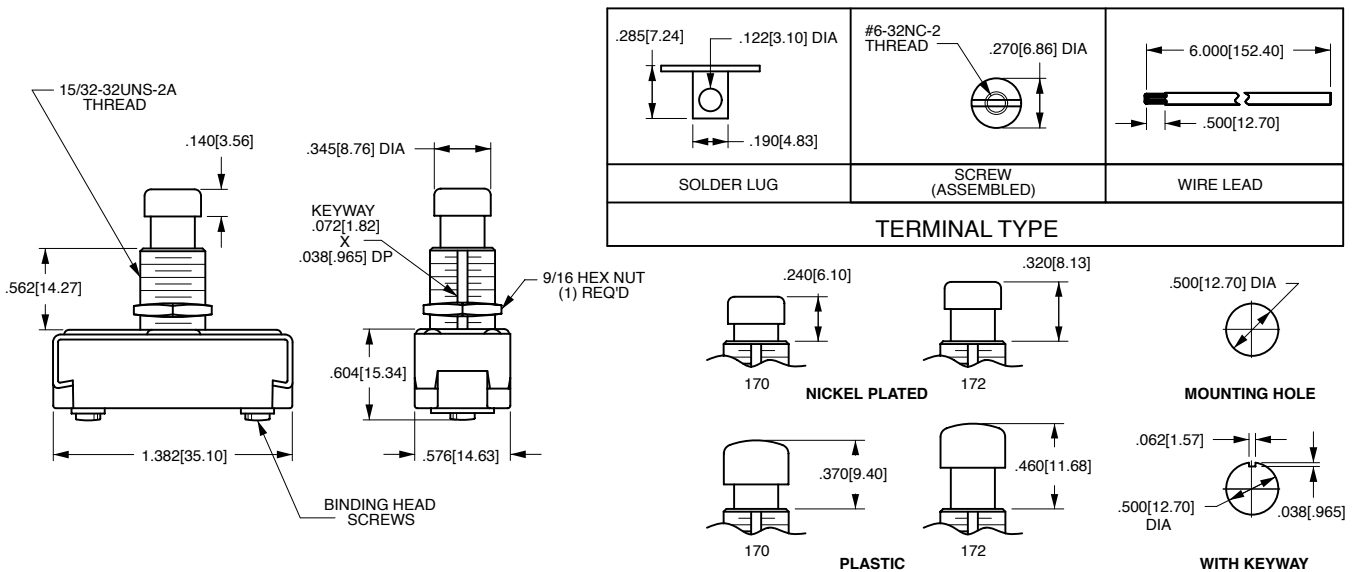
Red Plastic

CWH

White Plastic

Notes:

- ¹ When selection 2 is left blank, a standard nickel plated plunger is supplied.
- () Indicates momentary function.



*Manufacturer reserves the right to change product specification without prior notice.